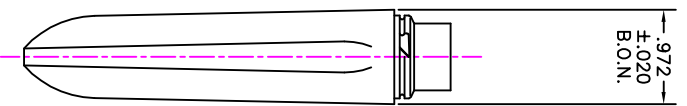
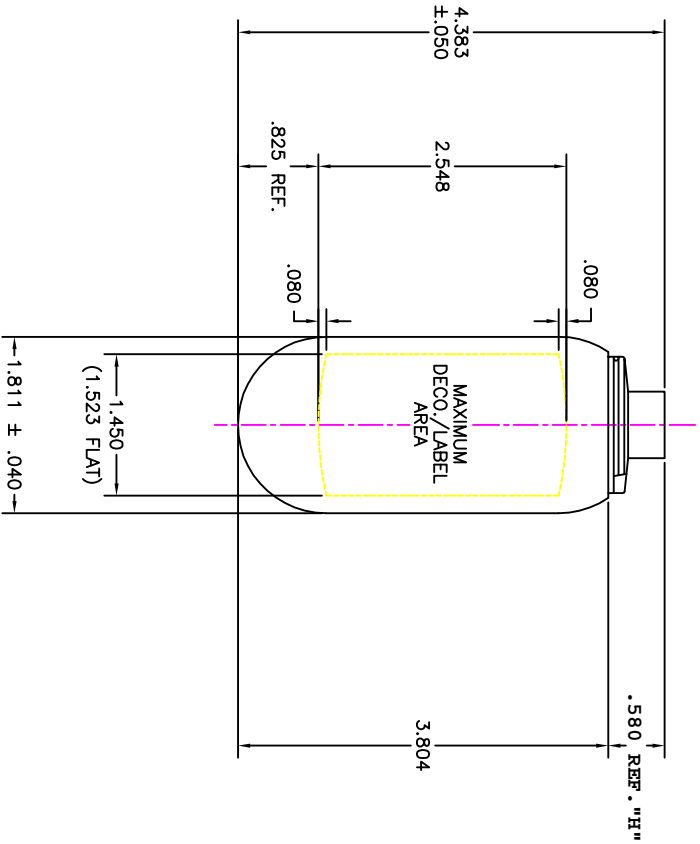
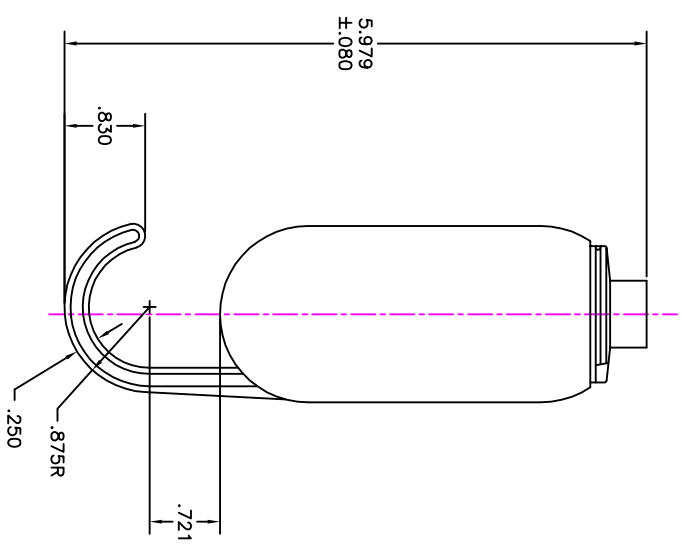


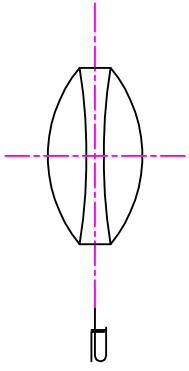
22mm SPECIAL SNAP  
NECK FINISH FOR USE  
WITH CUSTOM CLOSURE



OPTIONAL HOOK VERSION  
WEIGHT: 9.0 ± 0.5 GRAMS  
UNLESS OTHERWISE NOTED, ALL  
DIMENSIONS ARE IDENTICAL TO  
THE PLAIN VERSION.



PATENTED  
ALL ASPECT OF THIS DRAWING IS THE SOLE PROPERTY OF HEINZ WEBER.



DRAWING SPECIFICATIONS  
MATERIAL: HDPE  
WEIGHT: 10.0 ± 1.0 GRAMS  
OVERFLOW CAPACITY: 68.0 ± 3.5 ml  
HEAD SPACE AT MEAN O.F.C.: 15.0%

SUBJECT TO PROTOTYPE AND FIRST PRODUCTION EVALUATION.

REV "D" 03-08-21 NECK REMORKED PER LATEST STANDARDS.  
REV "C" 02-02-22 H WAS .630 ± .010.  
REV "B" 01-01-05 DECO. AREA REMORKED.  
REV "A" 99-10-28 HOOK VERSION ADDED.

INTERNATIONAL PACKAGING CORPORATION

2.0 FL.OZ. TOTTLE					
DATE	BY	CHKD	APP'D	REVISED	REASON
99-05-12	WPC-581-D	HDPE			AS ABOVE
WPC17					