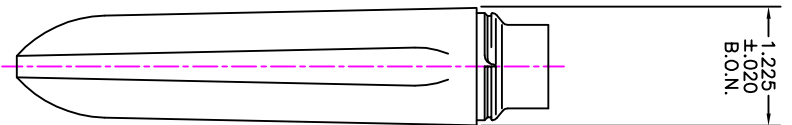
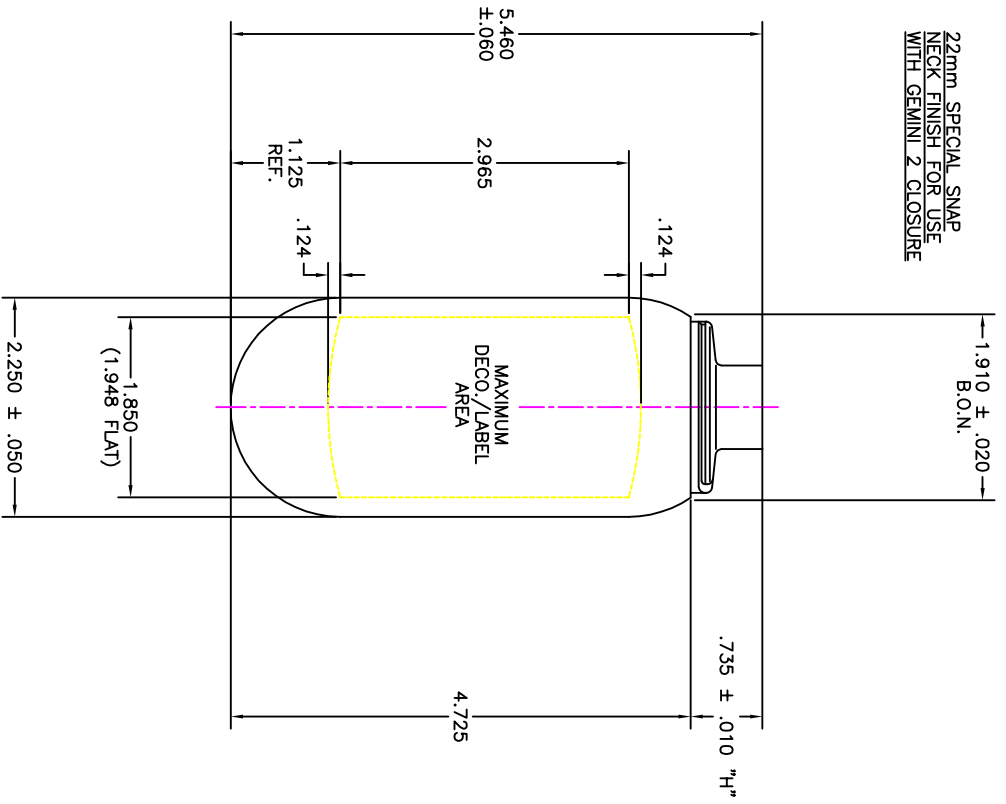
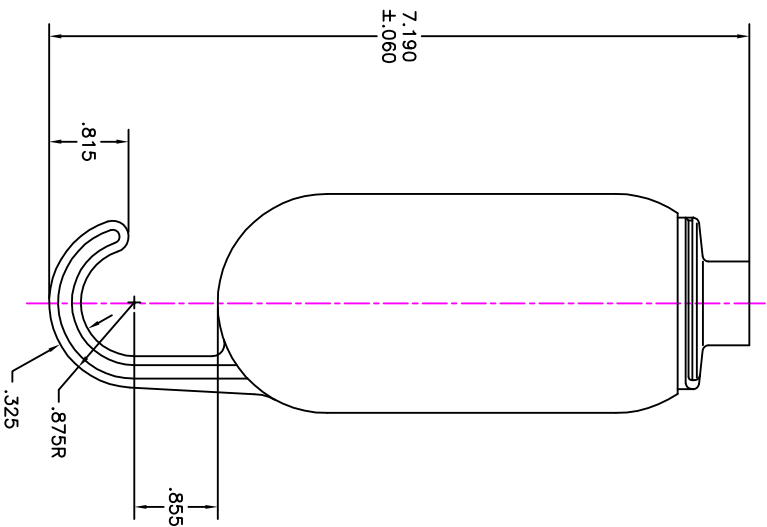


22mm SPECIAL SNAP
NECK FINISH FOR USE
WITH GEMINI 2 CLOSURE



OPTIONAL HOOK VERSION
WEIGHT: 17.0 ± 1.0 GRAMS
UNLESS OTHERWISE NOTED, ALL
DIMENSIONS ARE IDENTICAL TO
THE PLAIN VERSION.



PATENTED

ALL ASPECT OF THIS DRAWING IS THE SOLE PROPERTY OF HEINZ WEBER.
REV "C" 2001-01-05 I.D. TOL. WAS ±.015. REMORKED
DECO. AREA
REV "B" 2000-02-16 NECK REVISED TO LATEST STANDARD.
REV "A" 99-11-03 HOOK VERSION ADDED.

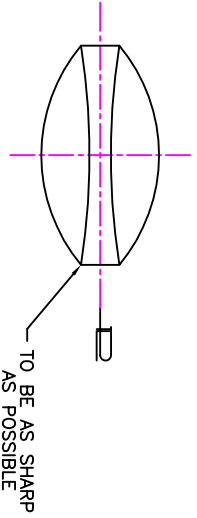


INTERNATIONAL PACKAGING CORPORATION

4.0 FL.OZ. BOTTLES

CODE	DATE	BY	TOLERANCE	FINISH	REMARKS
WPC1	99-01-20	WPC-BHO-558-C	SPI	AS ABOVE	(PARTIAL ENGINEERING)

DRAWING SPECIFICATIONS
MATERIAL: HDPE
WEIGHT: 15.0 ± 1.0 GRAMS
OVERFLOW CAPACITY: 130.0 ± 5.0 ml
HEAD SPACE AT MEAN O.F.C.: 10.0%



SUBJECT TO PROTOTYPE AND FIRST PRODUCTION EVALUATION.