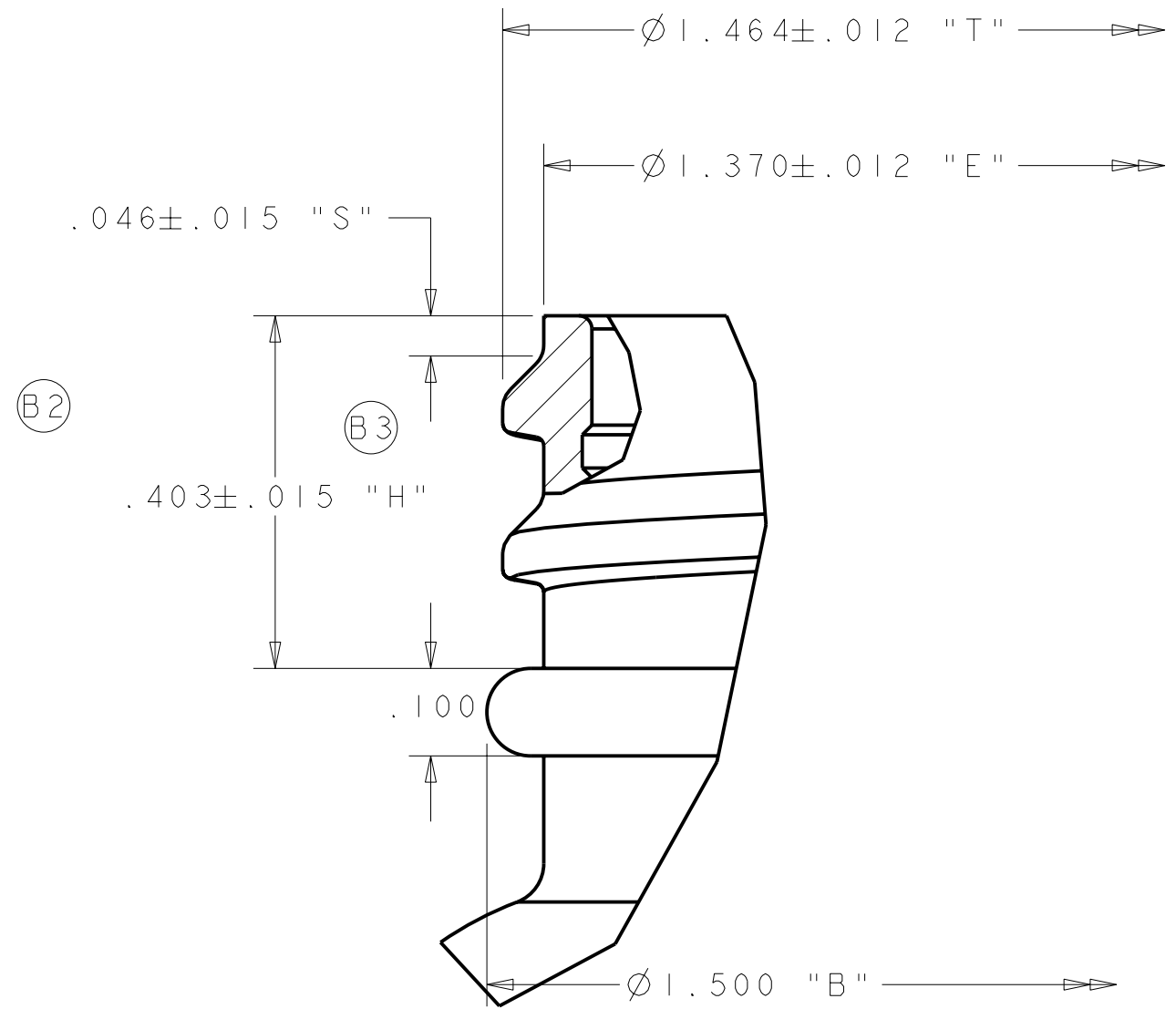
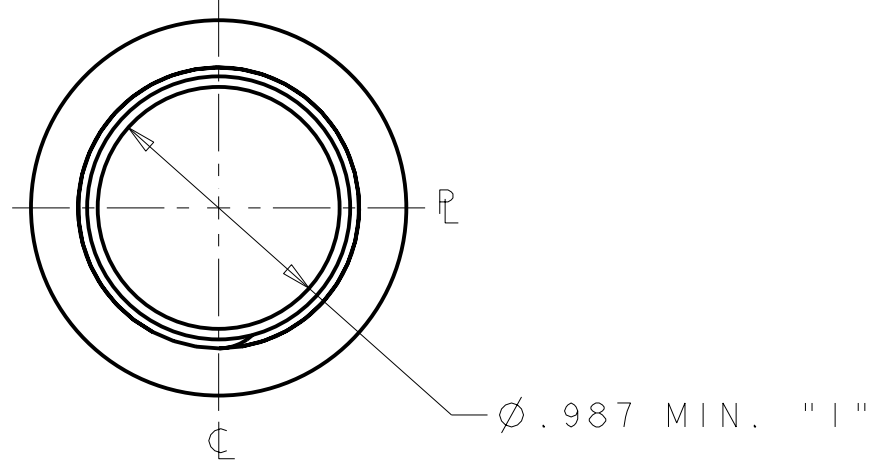
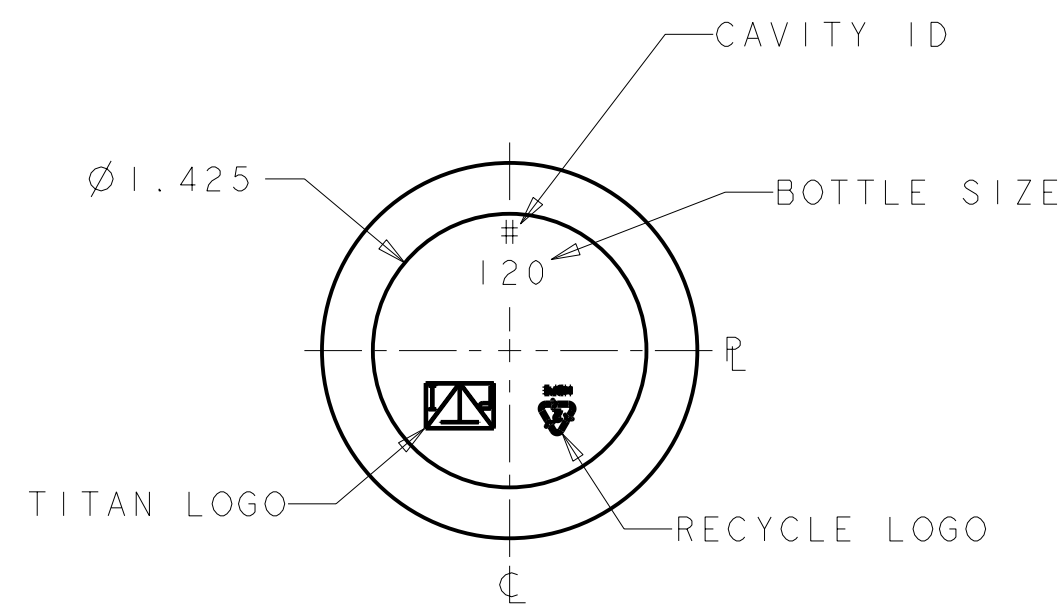
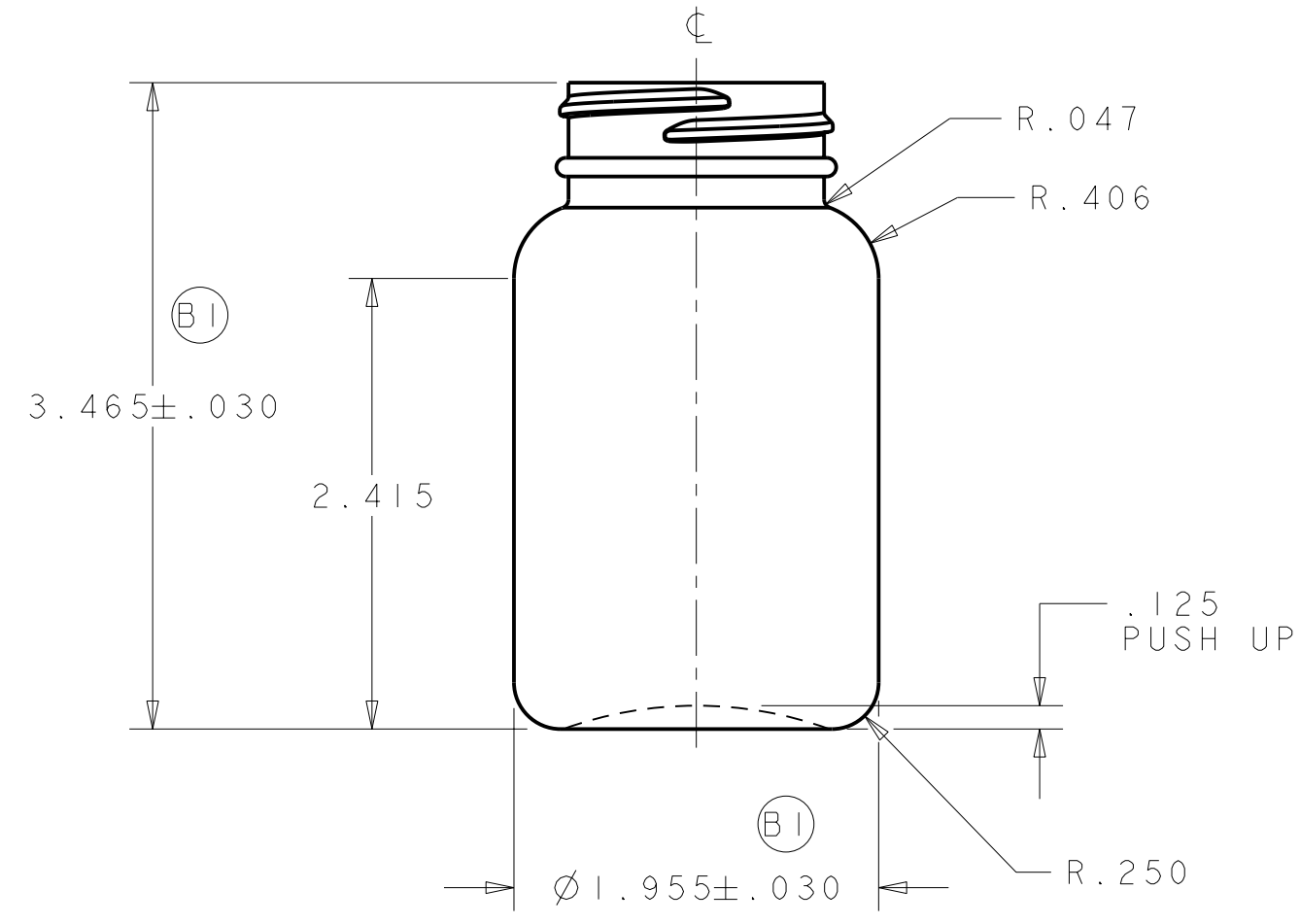


**NOTICE**  
 INFORMATION CONTAINED HEREIN CONSTITUTES PROPRIETARY, CONFIDENTIAL AND TRADE SECRET INFORMATION OF OWENS-ILLINOIS, INC., AND IS TO BE ACCEPTED SUBJECT TO THAT UNDERSTANDING. IT IS TO BE KEPT CONFIDENTIAL AND NOT TO BE COPIED, USED OR CONVEYED TO OTHERS WITHOUT OWENS-ILLINOIS' WRITTEN AUTHORIZATION.

DRAWING NO. <b>C-I-75790-01A-00</b>		REV. <b>B</b>
REVISIONS		
	REF C1-26763-1	
A	A1 ADDED SHEET 2	IDT 02-15-02
B	B1 WAS ±.060 B2 REMOVED .415 "H" REF B3 WAS "L" B4 MOVED TO NOTE 4 B5 WAS 134.5 CC / 4.54 FL OZ B6 ADDED NOTE #4	IDT 03-26-02



FINISH DETAIL  
SCALE 5:1



- NOTES
- 1) NECK FINISH - M38SP400 6 T.P.I. 1 FULL TURN OF THREAD
  - 2) MIN. WALL .015
  - 3) REF. TITAN DWG. # B-10-92-05
  - 4) 13.7 NAT / 13.9 WHT GRAMS±1.0

ALL DIMENSIONS ARE REPRESENTATIVE ONLY! FINAL SIZES TO BE DETERMINED AFTER CONTAINERS ARE MANUFACTURED.

"REFERENCE PRODUCT CENTER FOR CURRENT DRAWING"

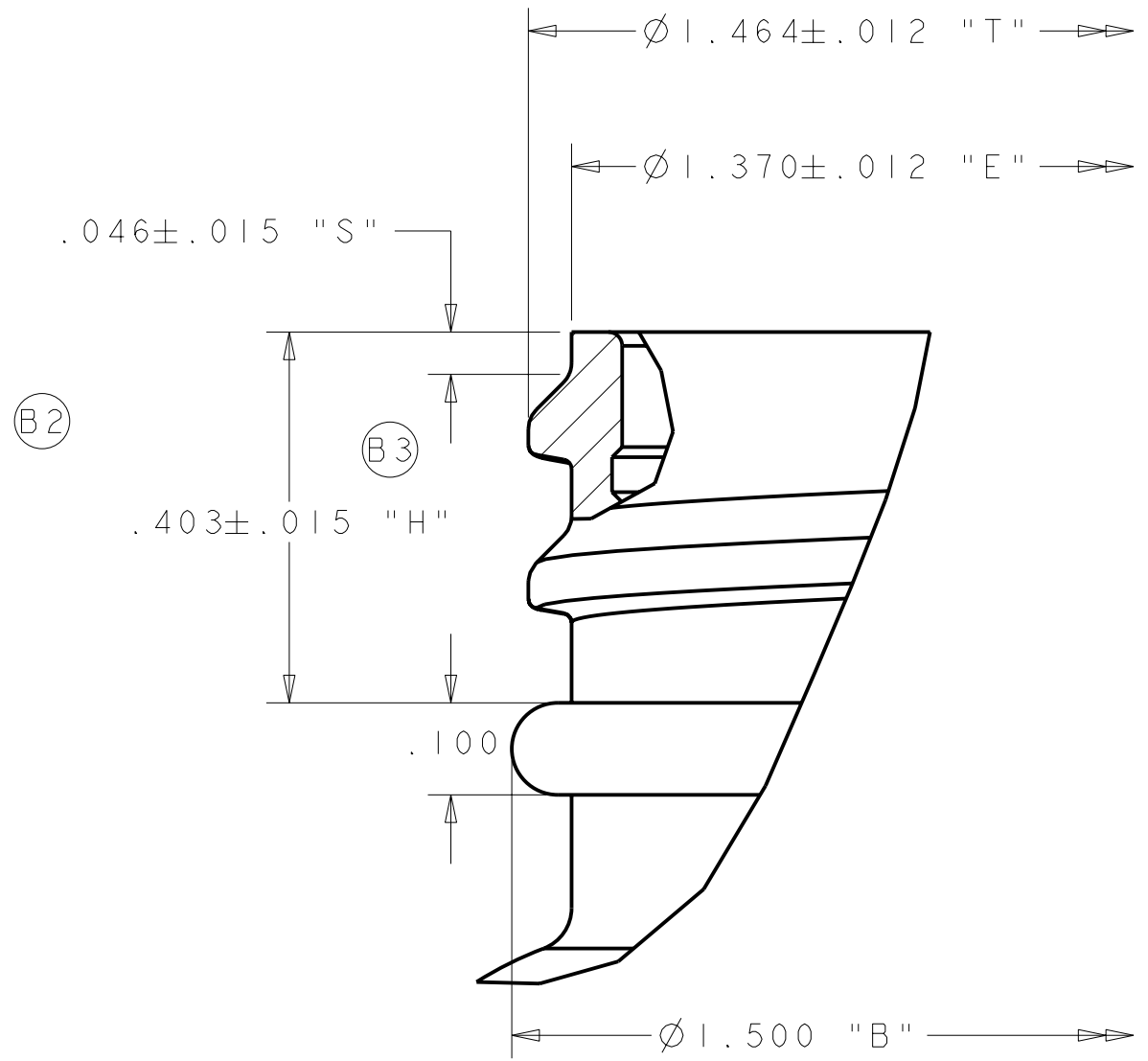
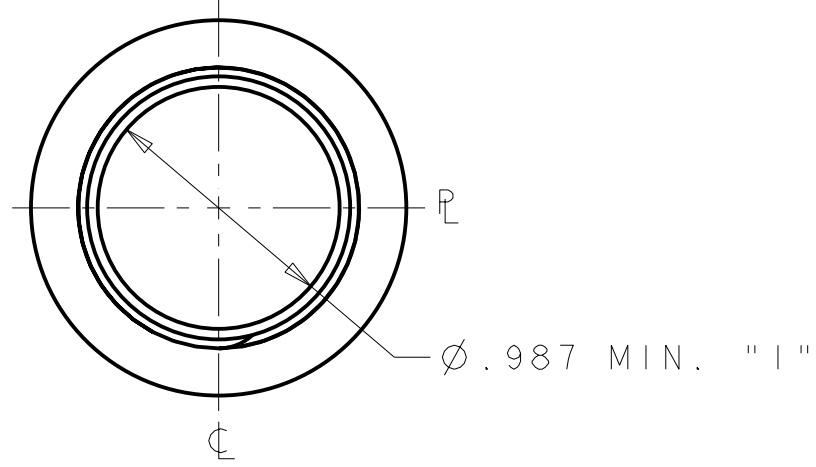
<b>OWENS BROCKWAY 120 CC WIDE MOUTH ROUND</b>	
PART LIB: CMS	DESIGNER I. TRENT & DATE 12-13-01
DESIGN AUTHORIZATION	P.D.E. B. MATTISON
<b>OWENS-ILLINOIS Plastics Group Container</b>	

(B4)	HDPE	136.0±5.0 CC 4.60±.17 FL OZ	CC FL OZ
<b>WEIGHT GRAMS</b>	<b>MATERIAL</b>	OVERFLOW AS MOLDED: TREAT ONLY, PAPER LABEL, UV SILKSCREEN, IML, HOT STAMP, PRESSURE SENSITIVE	OVERFLOW AFTER PRE & POST FLAME: HEAT TRANSFER LABEL, SILKSCREEN OVENS
MOLD NO.	I-75790	DRAWING NO.	C-I-75790-01A-00
		REV	B

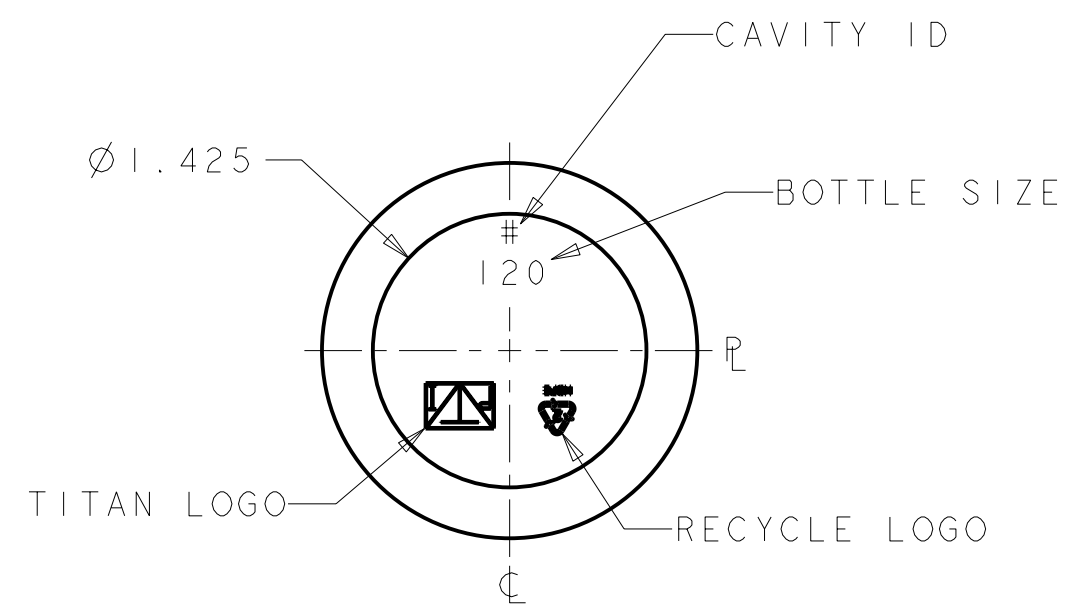
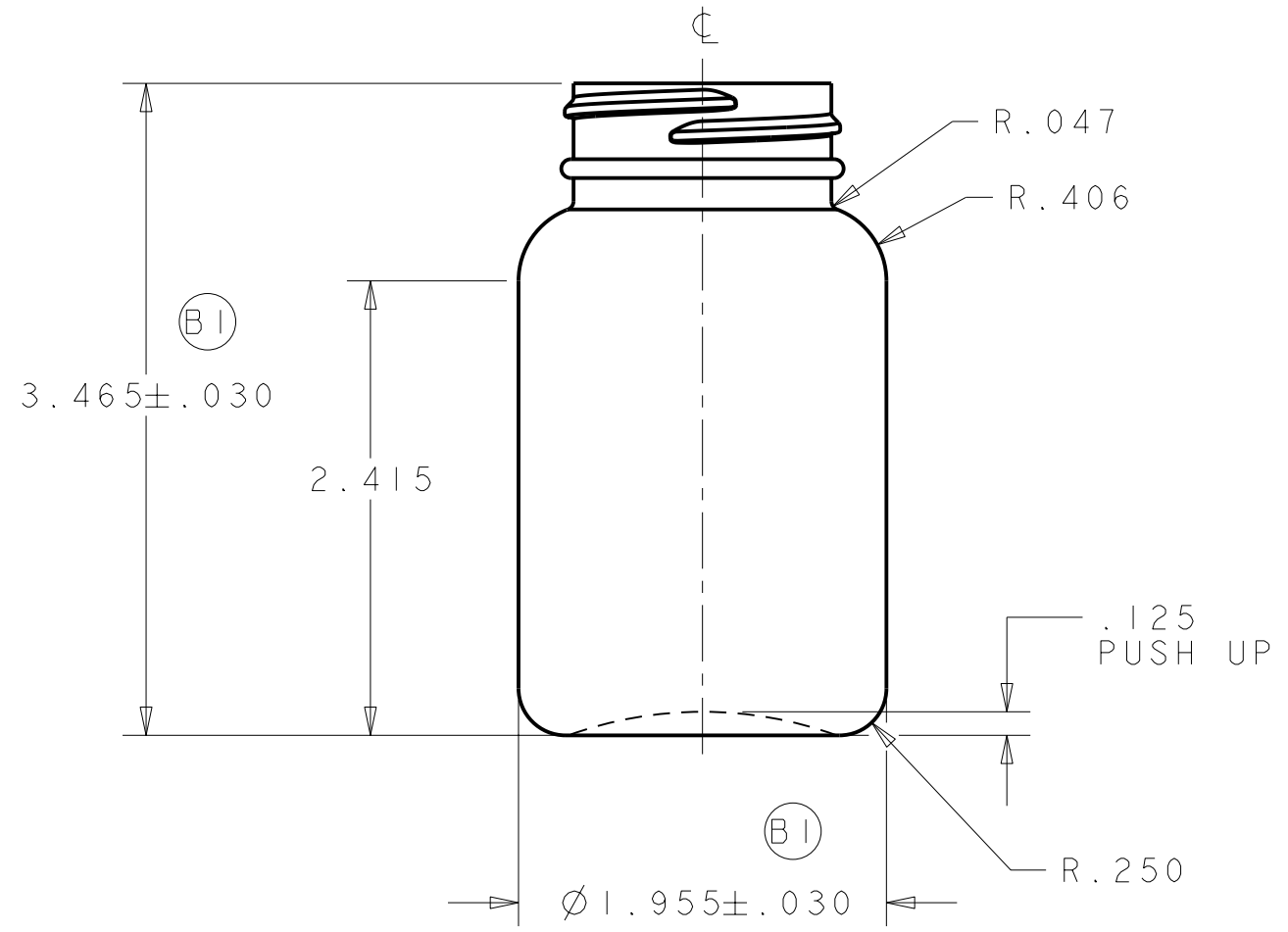
DIMENSIONS NOT TOLERANCED ARE PER S.P.I. STANDARDS  
 DIMENSIONAL TOLERANCES ±.030 HEIGHT UNLESS OTHERWISE SPECIFIED ±.030 BODY  
 NOTE: DIMENSIONAL TOLERANCES DO NOT APPLY TO FINISH DIMENSIONS OR TO LOCATION OF FILL POINT

**NOTICE**  
 INFORMATION CONTAINED HEREIN CONSTITUTES PROPRIETARY CONFIDENTIAL AND TRADE SECRET INFORMATION OF TITAN PLASTICS, AND IS TO BE ACCEPTED SUBJECT TO THAT UNDERSTANDING. IT IS TO BE KEPT CONFIDENTIAL AND NOT TO BE COPIED, USED OR CONVEYED TO OTHERS WITHOUT TITAN PLASTICS' WRITTEN AUTHORIZATION.

DRAWING NO. <b>C-11-120-38</b>		REV. <b>B</b>
<b>REVISIONS</b>		
A	A1 ADDED SHEET 2	IDT 02-15-02
B	B1 WAS ±.060 B2 REMOVED .420 "H" REF B3 WAS "L" B4 MOVED TO NOTE 4 B5 WAS 296.4 CC / 10.02 FL OZ B6 ADDED NOTE #4	IDT 03-26-02



FINISH DETAIL  
SCALE 5:1



- NOTES
- 1) NECK FINISH - M38SP400 6 T.P.I. 1 FULL TURN OF THREAD
  - 2) MIN. WALL .015
  - 3) REF. TITAN DWG. # B-10-92-05
  - 4) 13.7 NAT / 13.9 WHT GRAMS±1.0

ALL DIMENSIONS ARE REPRESENTATIVE ONLY! FINAL SIZES TO BE DETERMINED AFTER CONTAINERS ARE MANUFACTURED.

DIMENSIONS NOT TOLERANCED ARE PER S.P.I. STANDARDS  
 DIMENSIONAL TOLERANCES UNLESS OTHERWISE SPECIFIED ±.030 HEIGHT ±.030 BODY  
 NOTE: DIMENSIONAL TOLERANCES DO NOT APPLY TO FINISH DIMENSIONS OR TO LOCATION OF FILL POINT

④	HDPE	136.0±5.0 CC 4.60±.17 FL OZ	CC FL OZ
<b>WEIGHT GRAMS</b>	<b>MATERIAL</b>	OVERFLOW AS MOLDED: TREAT ONLY, PAPER LABEL, UV SILKSCREEN, IML, HOT STAMP, PRESSURE SENSITIVE	OVERFLOW AFTER PRE & POST FLAME: HEAT TRANSFER LABEL, SILKSCREEN OVENS
MOLD NO. <b>I-75790</b>	DRAWING NO. <b>C-11-120-38</b>	REV <b>B</b>	

**120 CC  
WIDE MOUTH ROUND**

PART LIB: CMS	DESIGNER I TRENT & DATE 12-13-01
DESIGN AUTHORIZATION	P.D.E. B MATTISON

**TITAN PLASTICS**