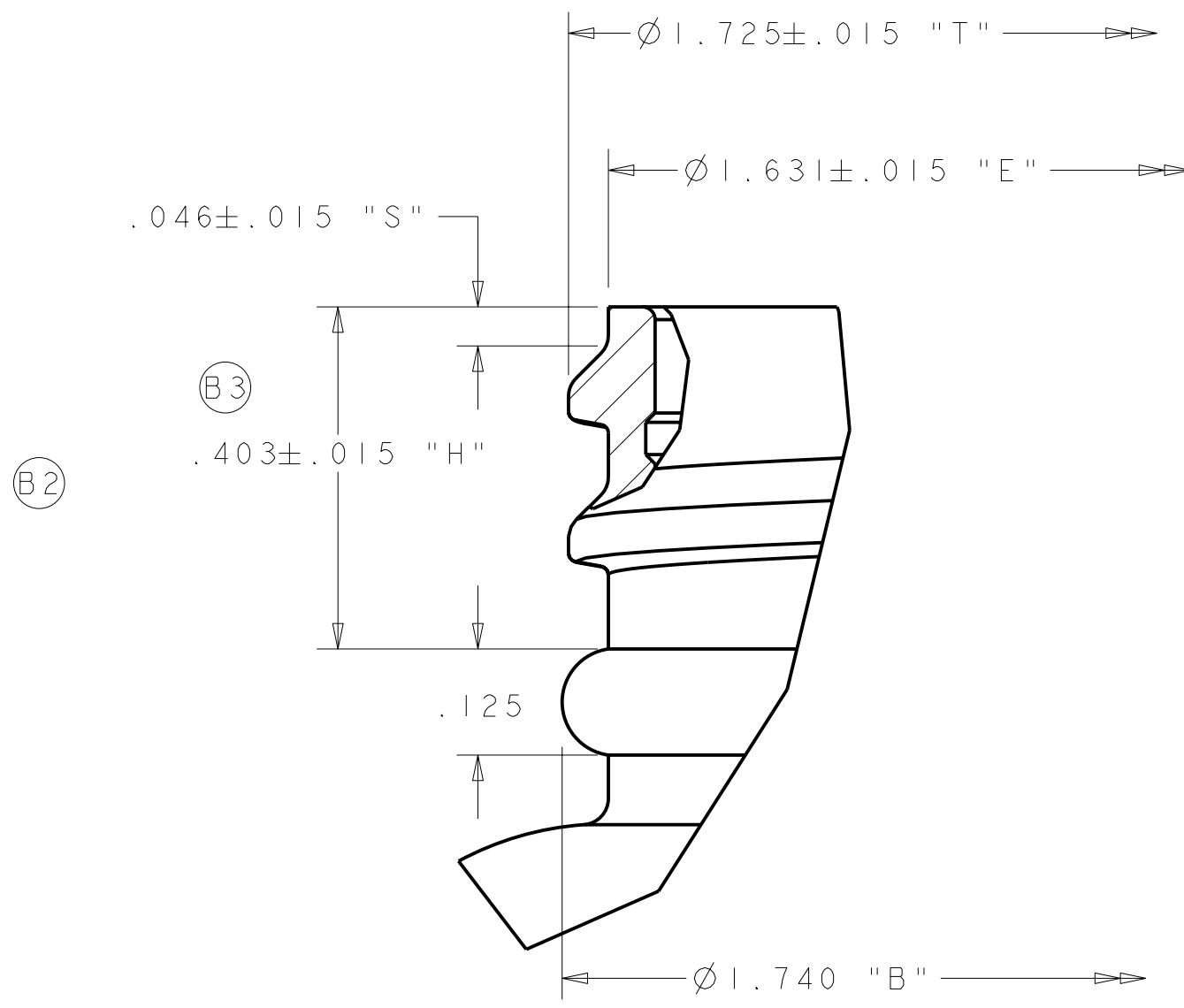
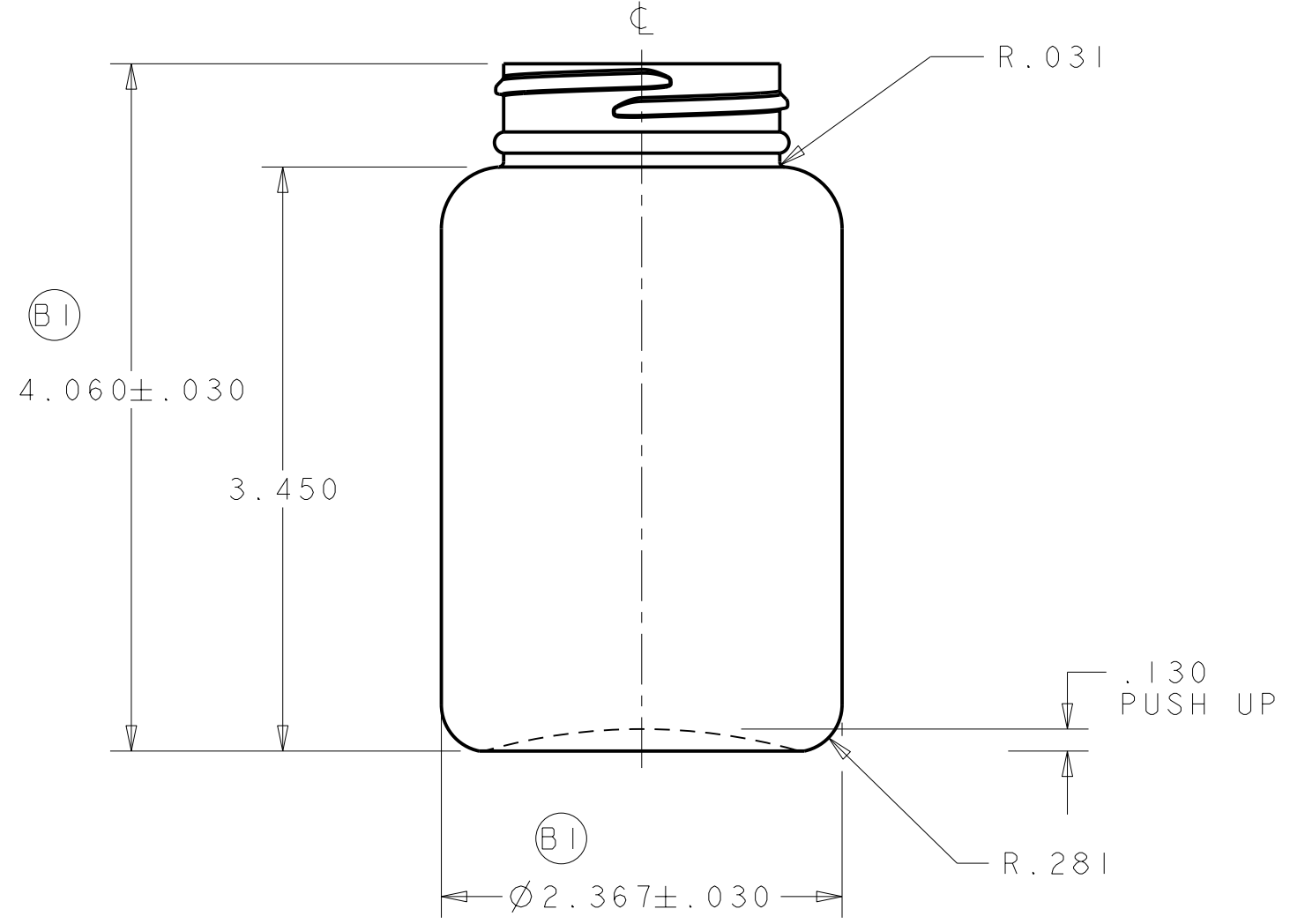
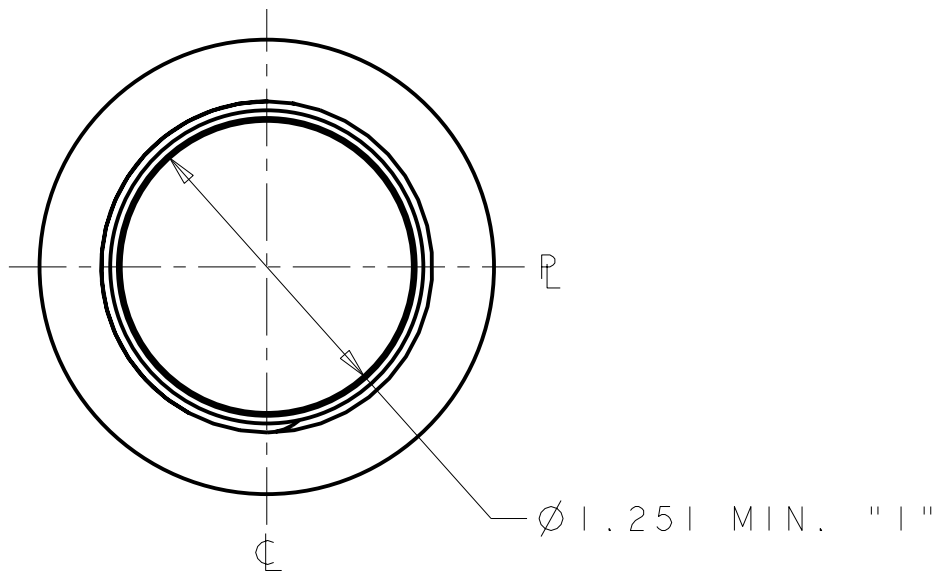
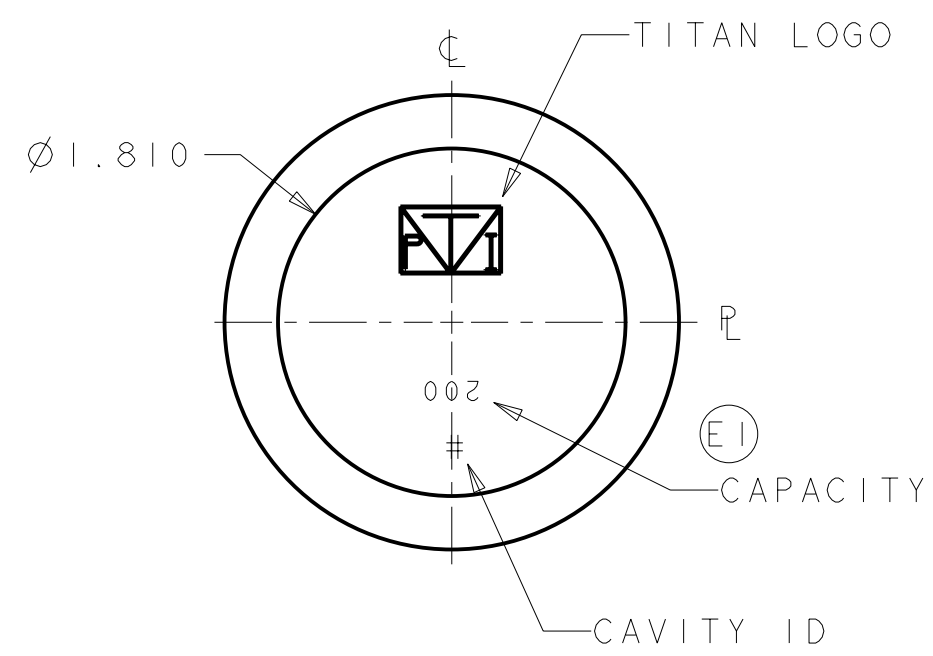


NOTICE
 INFORMATION CONTAINED HEREIN CONSTITUTES PROPRIETARY CONFIDENTIAL AND TRADE SECRET INFORMATION OF OWENS-ILLINOIS, INC., AND IS TO BE ACCEPTED SUBJECT TO THAT UNDERSTANDING. IT IS TO BE KEPT CONFIDENTIAL AND NOT TO BE COPIED, USED OR CONVEYED TO OTHERS WITHOUT OWENS-ILLINOIS' WRITTEN AUTHORIZATION.

DRAWING NO. C-I-75783-01A-00		REV. G
REVISIONS		
	REF C-I-26727-1	
A	A1 ADDED SHEET 2	IDT 02-15-02
B	B1 WAS ±.060 B2 REMOVED .436 "H" REF B3 WAS "L" B4 MOVED TO NOTE 4 B5 WAS 239.8 CC / 8.11 FL OZ B6 ADDED NOTE #4	IDT 03-13-02
C	C1 CORRECTED REV LETTER	IDT 03-28-02
D	D1 WAS 245.0 CC / 8.29 FL OZ	IDT 05-23-02
E	E1 UPDATED ENGRAVING TO MATCH PRODUCTION	IDT 05-23-02
F	F CORRECTED REV D DATE ON TITAN DRAWING C-I-1-20045	DPD 6-15-04
G	G1 WAS ±0.5 GRAM WEIGHT TOL	DPD 9-23-04



FINISH DETAIL
SCALE 5:1



- NOTES:
- 1) NECK FINISH - M45SP400 6 T.P.I. 1 FULL TURN OF THREAD
 - 2) MIN. WALL .015
 - 3) REF. TITAN DWG. # B-05-94-05
 - 4) 21.4 NAT / 21.8 WHT GRAMS ± 1.0 (B6G1)

ALL DIMENSIONS ARE REPRESENTATIVE ONLY! FINAL SIZES TO BE DETERMINED AFTER CONTAINERS ARE MANUFACTURED.

"REFERENCE PRODUCT CENTER FOR CURRENT DRAWING"

DIMENSIONS NOT TOLERANCED ARE PER S.P.I. STANDARDS
 DIMENSIONAL TOLERANCES UNLESS OTHERWISE SPECIFIED ±.030 HEIGHT ±.030 BODY
 NOTE: DIMENSIONAL TOLERANCES DO NOT APPLY TO FINISH DIMENSIONS OR TO LOCATION OF FILL POINT

	HDPE	238.0 ± 7.0 CC 8.04 ± 0.24 FL OZ	CC FL OZ
WEIGHT GRAMS	MATERIAL	OVERFLOW AS MOLDED: TREAT ONLY, PAPER LABEL, UV SILKSCREEN, IML, HOT STAMP, PRESSURE SENSITIVE	OVERFLOW AFTER PRE & POST FLAME: HEAT TRANSFER LABEL, SILKSCREEN OVENS
MOLD NO. I-75783	DRAWING NO. C-I-75783-01A-00	REV G	

OWENS BROCKWAY
200ML
WIDE MOUTH ROUND

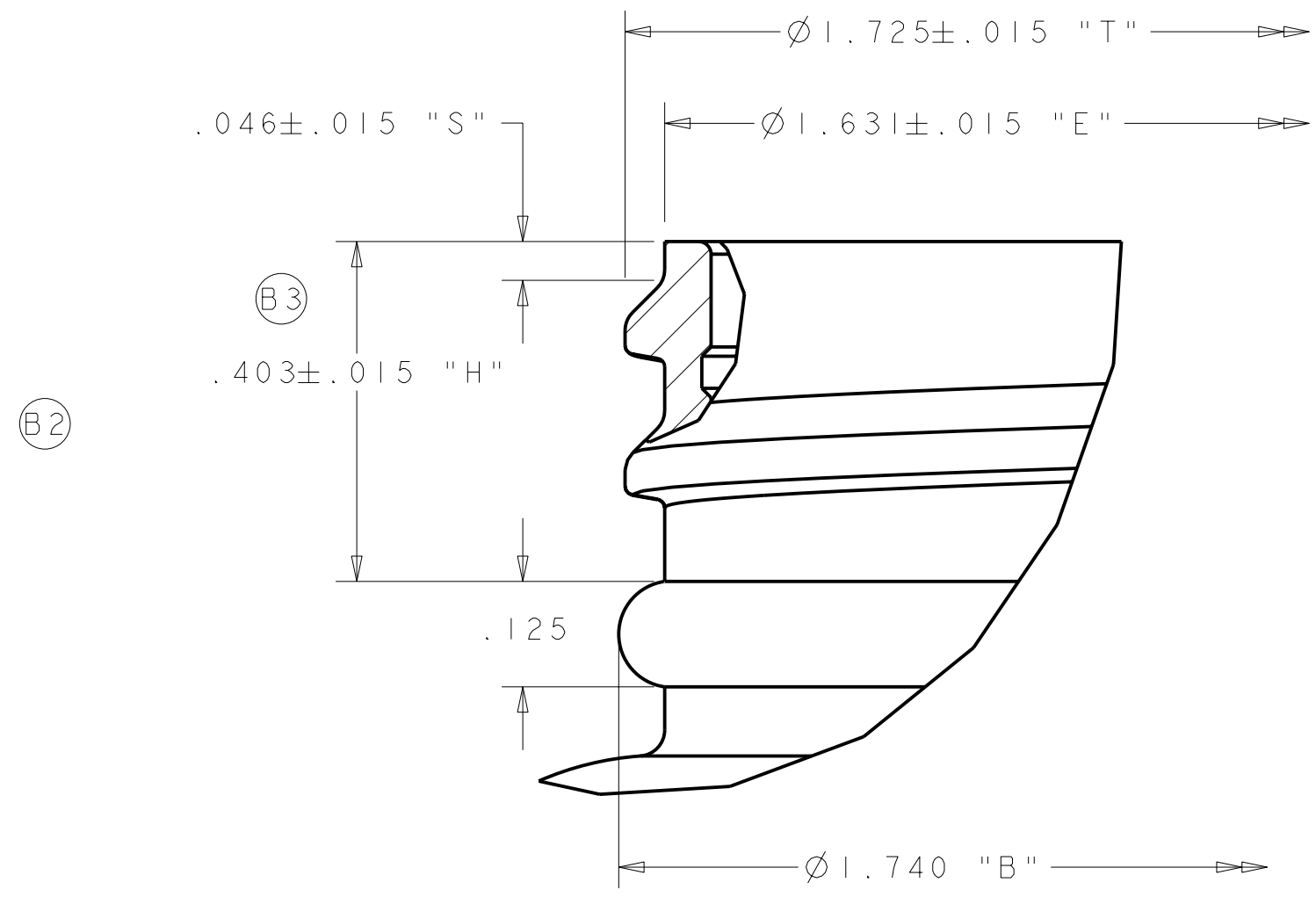
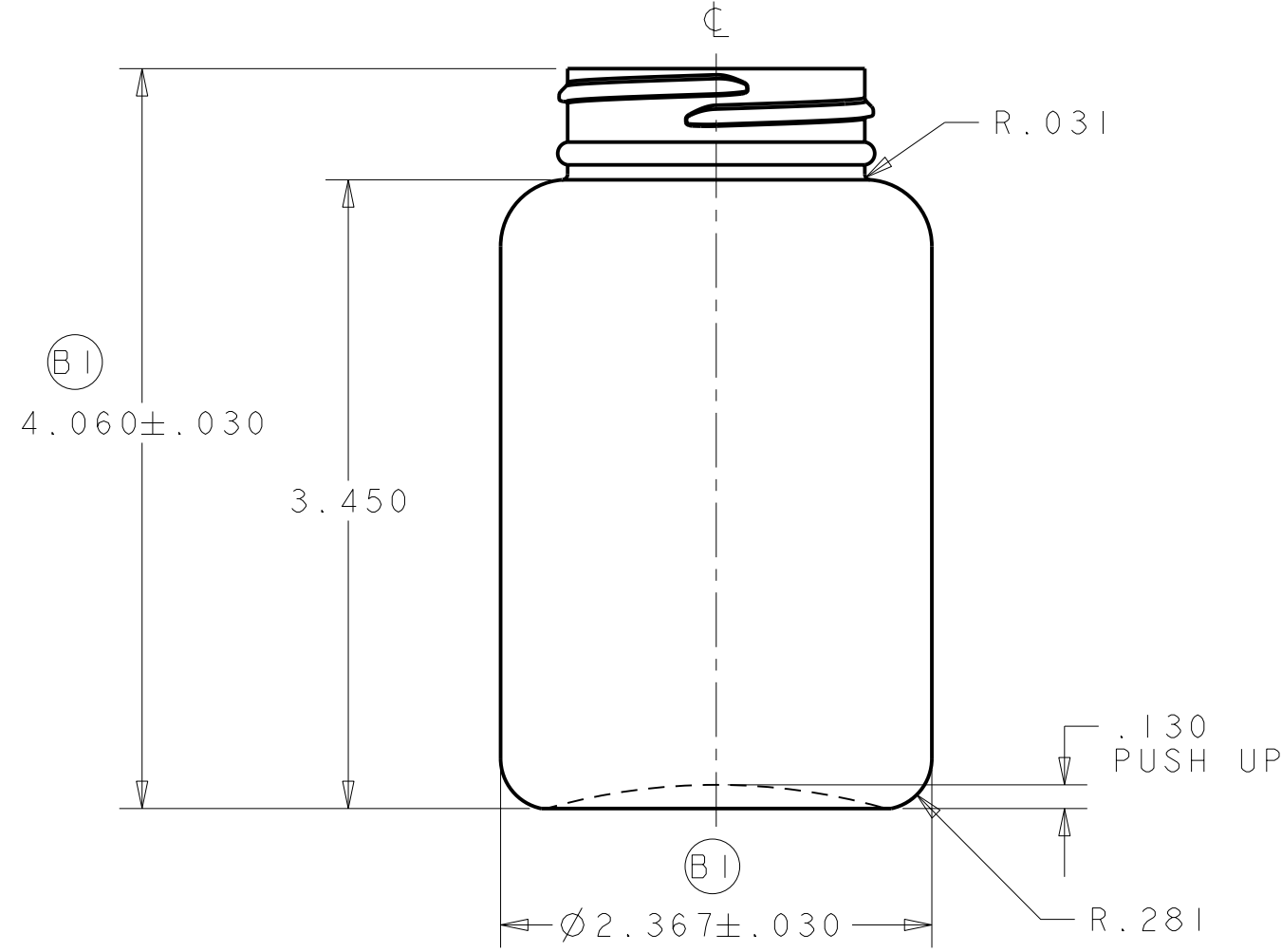
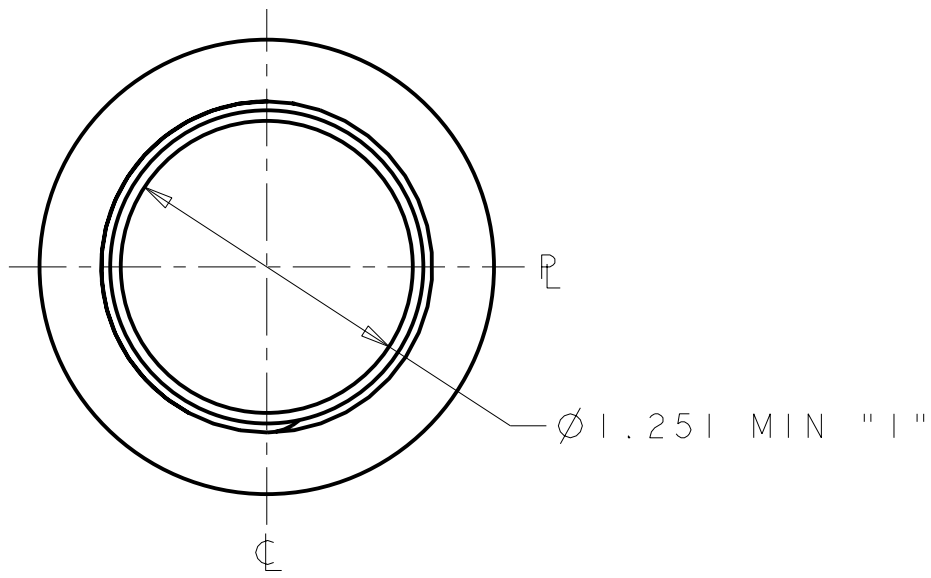
PART LIB: CMS	DESIGNER & DATE: I. TRENT 12-10-01
DESIGN AUTHORIZATION: MEA 101382	P.D.E.: B MATTISON

OWENS-ILLINOIS
Plastics Group
Container

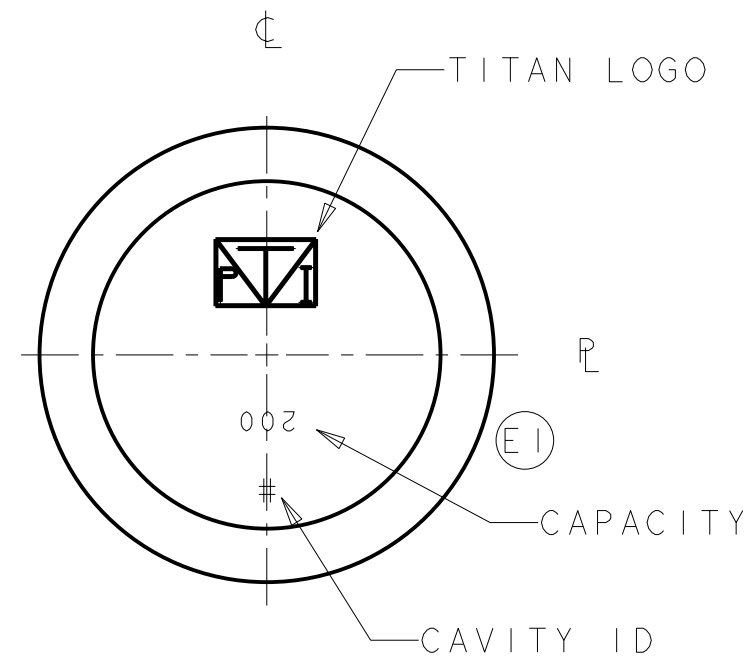
Approved by Customer

NOTICE
 INFORMATION CONTAINED HEREIN CONSTITUTES PROPRIETARY CONFIDENTIAL AND TRADE SECRET INFORMATION OF TITAN PLASTICS, AND IS TO BE ACCEPTED SUBJECT TO THAT UNDERSTANDING. IT IS TO BE KEPT CONFIDENTIAL AND NOT TO BE COPIED, USED OR CONVEYED TO OTHERS WITHOUT TITAN PLASTICS' WRITTEN AUTHORIZATION.

DRAWING NO. C-11-200-45		REV. G
REVISIONS		
A	A1 ADDED SHEET 2	IDT 02-15-02
B	B1 WAS ±.060 B2 REMOVED .436 "H" REF B3 WAS "L" B4 MOVED TO NOTE 4 B5 WAS 239.8 CC / 8.11 FL OZ B6 ADDED NOTE #4	IDT 03-13-02
C	C1 CORRECTED REV LETTER	IDT 03-28-02
D	D1 WAS 245.0 CC / 8.29 FL OZ	IDT 05-23-02
E	E1 UPDATED ENGRAVING TO MATCH PRODUCTION	DPD 12-23-03
F	F CORRECTED REV D DATE	DPD 6-15-04
G	G1 WAS ±0.5 GRAM WEIGHT TOL	DPD 9-23-04



FINISH DETAIL
SCALE 5:1



- NOTES:
- 1) NECK FINISH - M45SP400 6 T.P.I. 1 FULL TURN OF THREAD
 - 2) MIN. WALL .015
 - 3) REF. TITAN DWG. # B-05-94-05
 - (B6)(G1) 4) 21.4 NAT / 21.8 WHT GRAMS±1.0

ALL DIMENSIONS ARE REPRESENTATIVE ONLY! FINAL SIZES TO BE DETERMINED AFTER CONTAINERS ARE MANUFACTURED.

DIMENSIONS NOT TOLERANCED ARE PER S.P.I. STANDARDS
 DIMENSIONAL TOLERANCES UNLESS OTHERWISE SPECIFIED ±.030 HEIGHT ±.030 BODY
 NOTE: DIMENSIONAL TOLERANCES DO NOT APPLY TO FINISH DIMENSIONS OR TO LOCATION OF FILL POINT

	HDPE	238.0±7.0 CC 8.04±0.24 FL OZ	CC FL OZ
WEIGHT GRAMS	MATERIAL	OVERFLOW AS MOLDED: TREAT ONLY, PAPER LABEL, UV SILKSCREEN, IML, HOT STAMP, PRESSURE SENSITIVE	OVERFLOW AFTER PRE & POST FLAME: HEAT TRANSFER LABEL, SILKSCREEN OVENS
MOLD NO.	I-75783	DRAWING NO.	C-11-200-45
REV	G		

**200 ML
WIDE MOUTH ROUND**

PART LIB: CMS	DESIGNER & DATE: I. TRENT 12-10-01
DESIGN AUTHORIZATION	P.D.E.: B MATTISON

TITAN PLASTICS

Approved by Customer