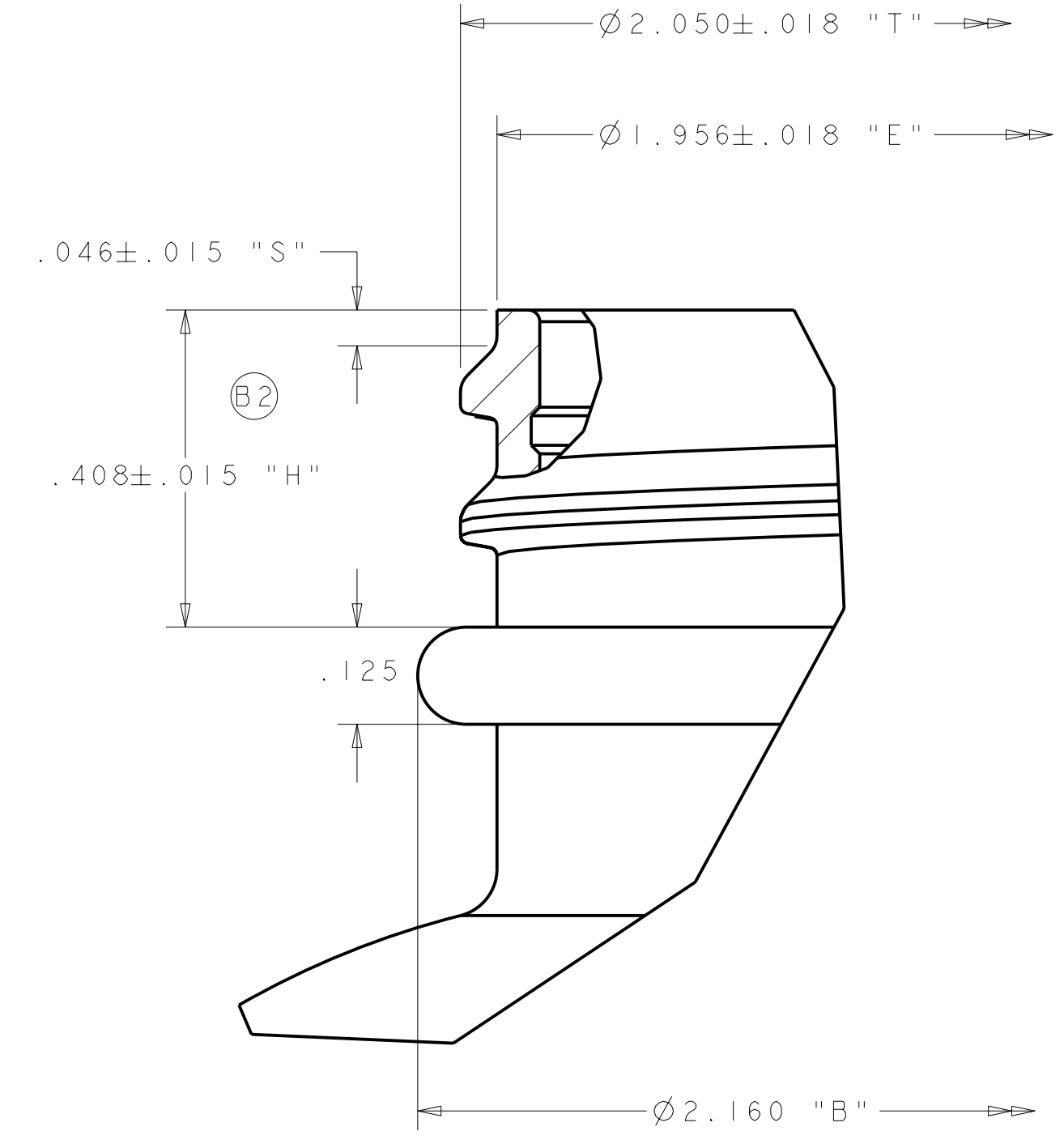
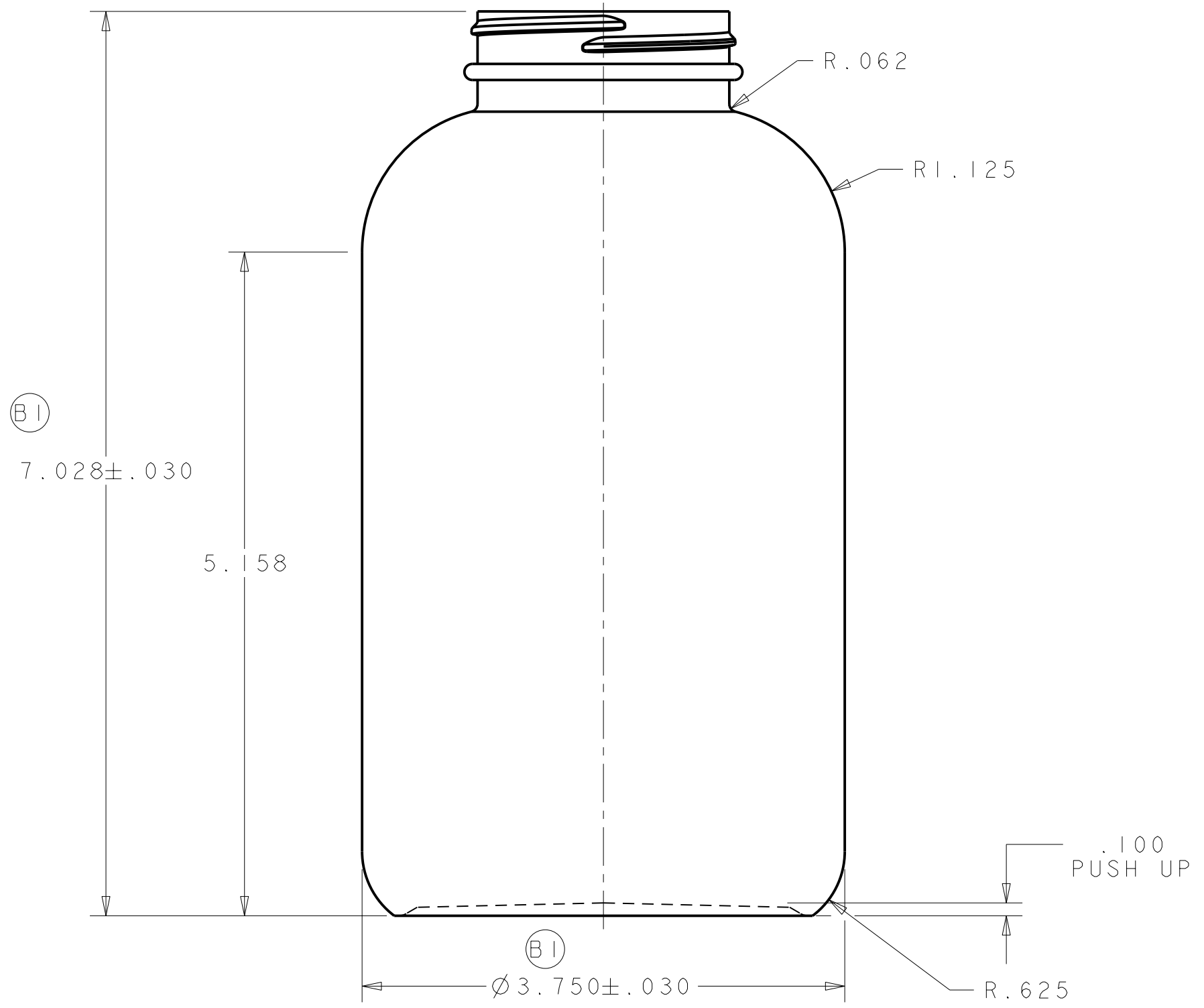
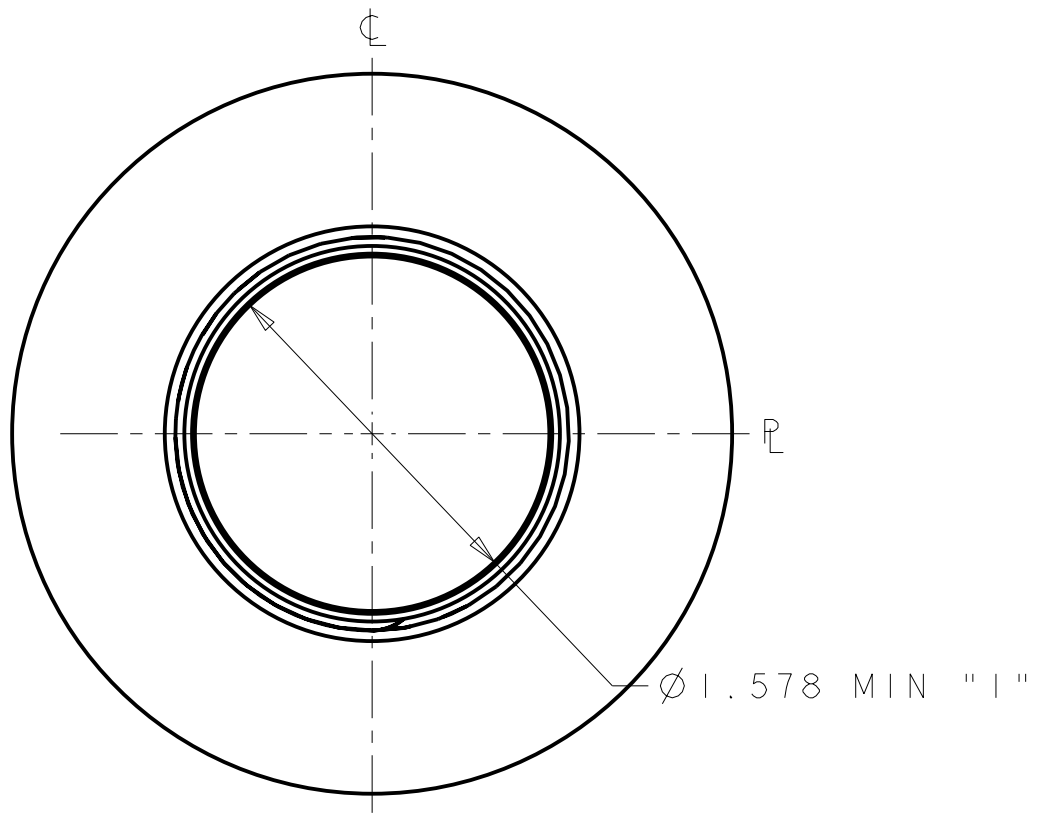
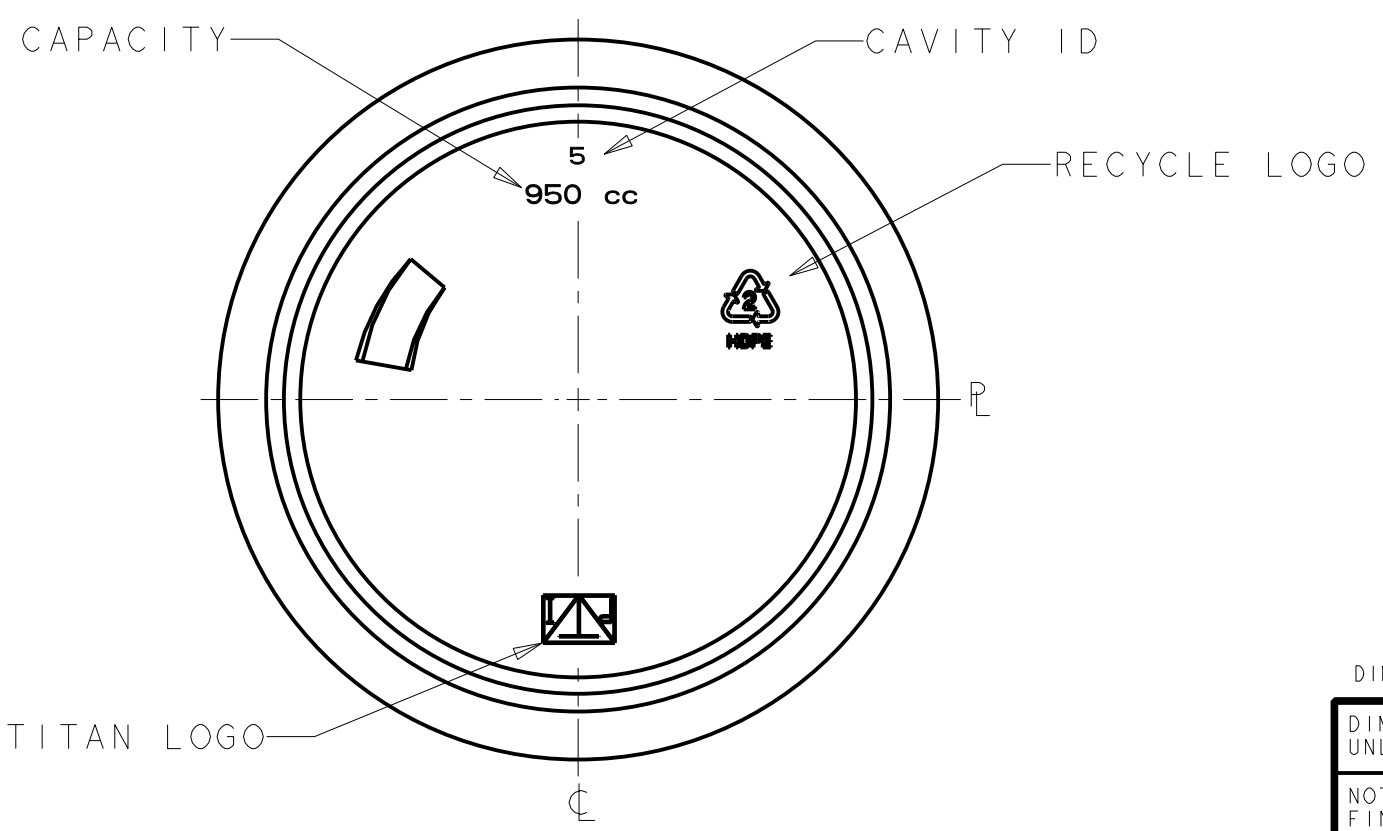


NOTICE
 INFORMATION CONTAINED HEREIN CONSTITUTES PROPRIETARY CONFIDENTIAL AND TRADE SECRET INFORMATION OF OWENS-ILLINOIS, INC., AND IS TO BE ACCEPTED SUBJECT TO THAT UNDERSTANDING. IT IS TO BE KEPT CONFIDENTIAL AND NOT TO BE COPIED, USED OR CONVEYED TO OTHERS WITHOUT OWENS-ILLINOIS' WRITTEN AUTHORIZATION.

DRAWING NO. C-I-75803-01A-00		REV. B
REVISIONS		
	REF C1-27196-1	
A	REF C1-27196-1	IDT 02-20-02
B	B1 WAS ±.060 B2 WAS "L" B3 WAS 1056.9 CC / 35.72 FL OZ	IDT 03-19-02



FINISH DETAIL
SCALE 5:1



- NOTES:
- 1) NECK FINISH - M53SP400 6 TPI
1 FULL TURN OF THREAD
 - 2) MIN WALL .015
 - 3) REF. TITAN DWG. # C-01-94-04

ALL DIMENSIONS ARE REPRESENTATIVE ONLY!
 FINAL SIZES TO BE DETERMINED AFTER
 CONTAINERS ARE MANUFACTURED.

"REFERENCE PRODUCT CENTER FOR CURRENT DRAWING"

OWENS-BROCKWAY
950 CC
WIDE MOUTH ROUND

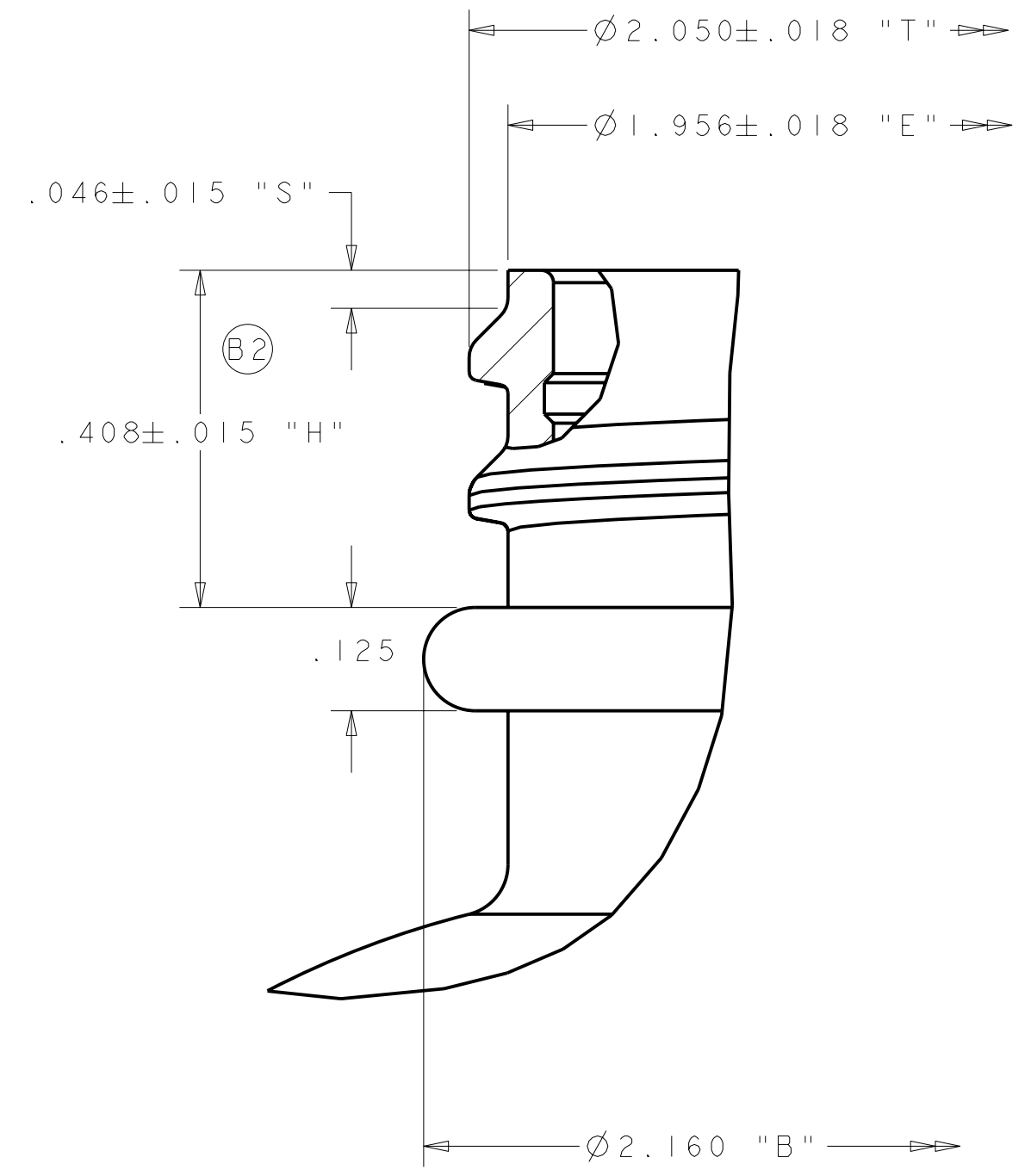
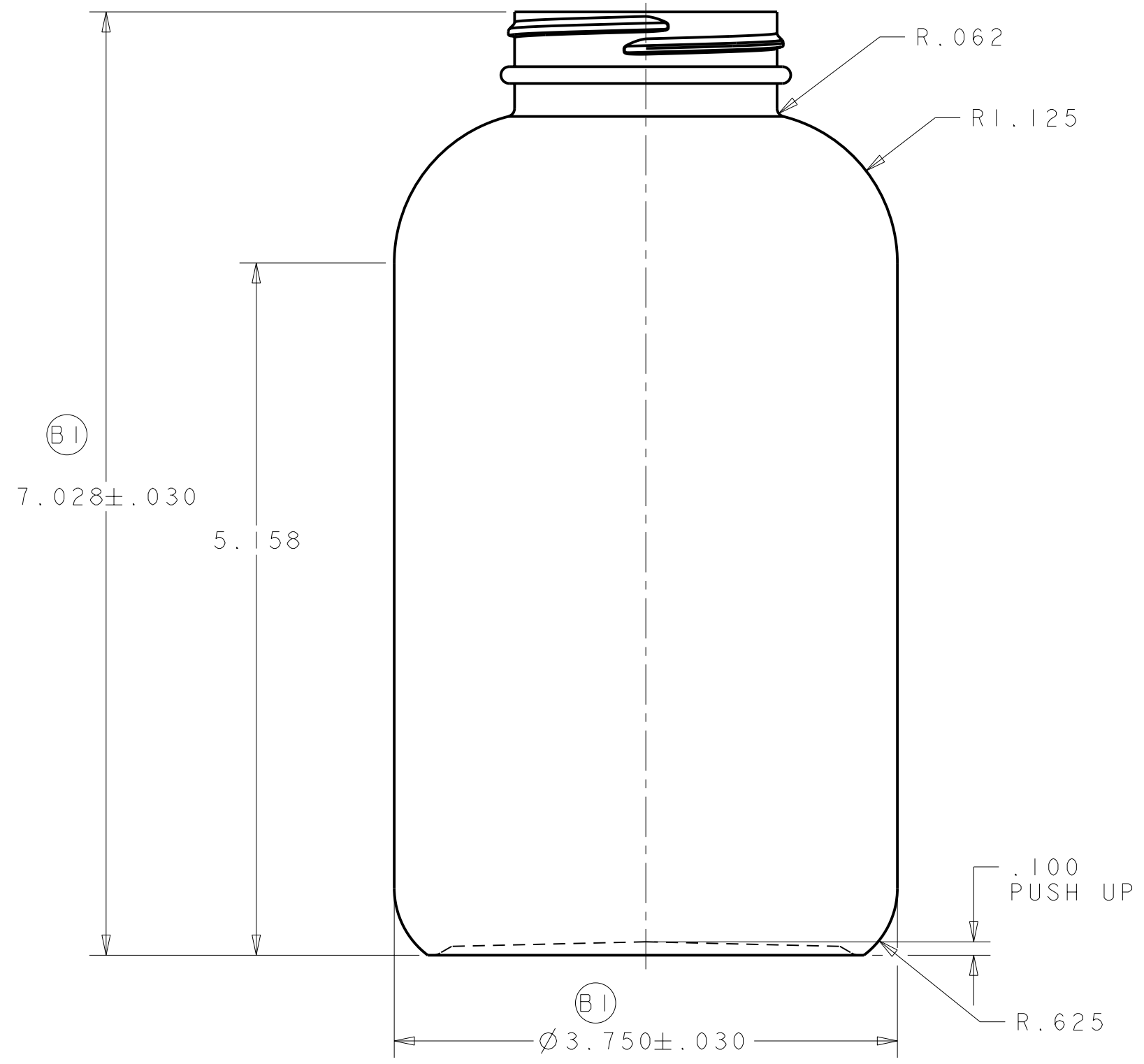
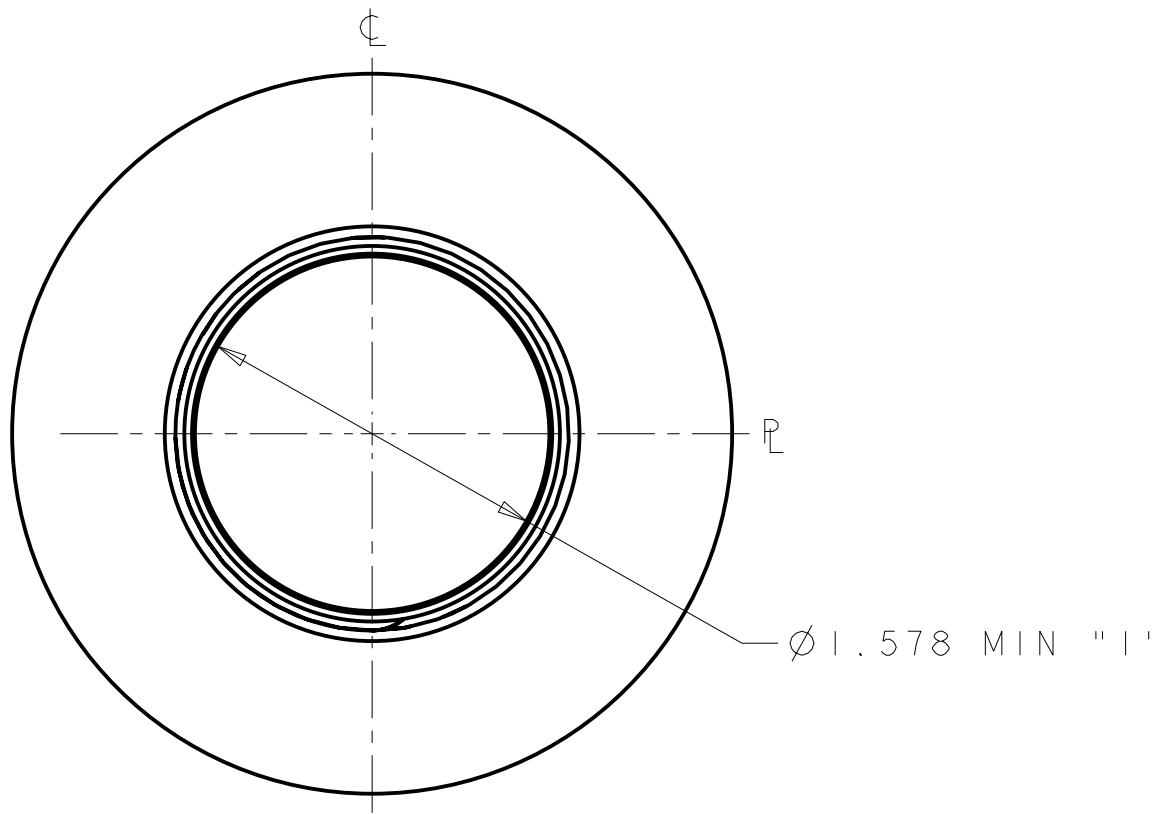
±4.0 54.0	HDPE	1045.0±15.0 CC 35.24±.50 FL OZ	CC FL OZ
WEIGHT 'GRAMS'	MATERIAL	OVERFLOW AS MOLDED: TREAT ONLY, PAPER LABEL, UV SILKSCREEN, TML, HOT STAMP, PRESSURE SENSITIVE	OVERFLOW AFTER PRE & POST FLAME: HEAT TRANSFER LABEL, SILKSCREEN OVENS
MOLD NO. I-75803	DRAWING NO. C-I-75803-01A-00	REV B	

PART LIB: CMS	DESIGNER I TRENT & DATE 12-13-01
DESIGN AUTHORIZATION	P.D.E. B MATTISON
OWENS-ILLINOIS Plastics Group Container	

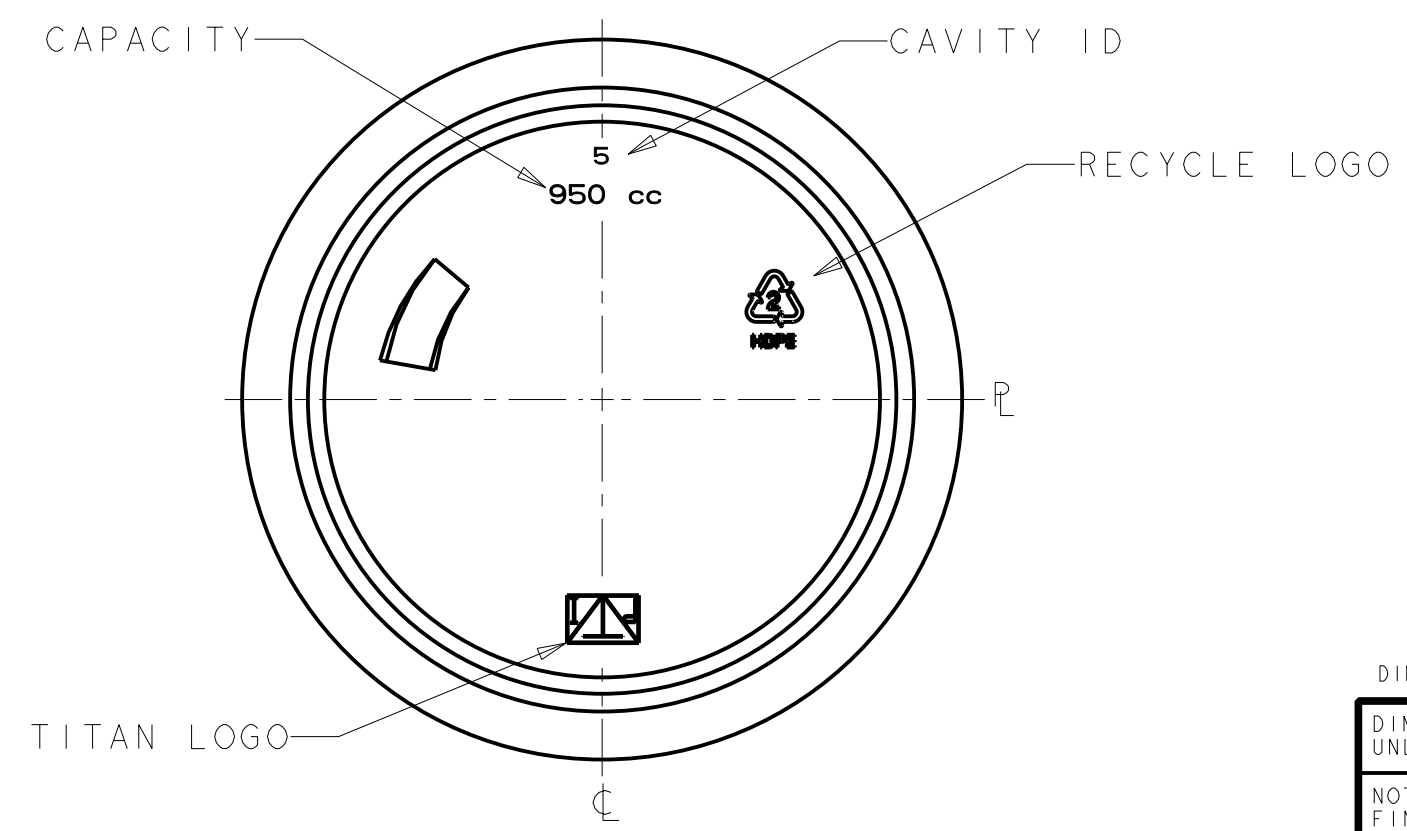
DIMENSIONS NOT TOLERANCED ARE PER S.P.I. STANDARDS
 DIMENSIONAL TOLERANCES ±.030 HEIGHT
 UNLESS OTHERWISE SPECIFIED ±.030 BODY
 NOTE: DIMENSIONAL TOLERANCES DO NOT APPLY TO
 FINISH DIMENSIONS OR TO LOCATION OF FILL POINT

NOTICE
 INFORMATION CONTAINED HEREIN CONSTITUTES PROPRIETARY CONFIDENTIAL AND TRADE SECRET INFORMATION OF TITAN PLASTICS, AND IS TO BE ACCEPTED SUBJECT TO THAT UNDERSTANDING. IT IS TO BE KEPT CONFIDENTIAL AND NOT TO BE COPIED, USED OR CONVEYED TO OTHERS WITHOUT TITAN PLASTICS' WRITTEN AUTHORIZATION.

DRAWING NO. C-11-950-53		REV. B
REVISIONS		
A	A1 ADDED SHEET 2	IDT 02-20-01
B	B1 WAS ±.060 B2 WAS "L" B3 WAS 1056.9 CC / 35.72 FL OZ	IDT 03-19-02



FINISH DETAIL
SCALE 5:1



- NOTES:
- 1) NECK FINISH - M53SP400 6 TPI
1" FULL TURN OF THREAD
 - 2) MIN WALL .015
 - 3) REF. TITAN DWG. # C-01-94-04

ALL DIMENSIONS ARE REPRESENTATIVE ONLY!
 FINAL SIZES TO BE DETERMINED AFTER CONTAINERS ARE MANUFACTURED.

DIMENSIONS NOT TOLERANCED ARE PER S.P.I. STANDARDS
 DIMENSIONAL TOLERANCES UNLESS OTHERWISE SPECIFIED ±.030 HEIGHT ±.030 BODY
 NOTE: DIMENSIONAL TOLERANCES DO NOT APPLY TO FINISH DIMENSIONS OR TO LOCATION OF FILL POINT

±4.0 54.0	HDPE	1045.0±15.0 CC 35.24±.50 FL OZ	CC FL OZ
WEIGHT GRAMS	MATERIAL	OVERFLOW AS MOLDED: TREAT ONLY, PAPER LABEL, UV SILKSCREEN, IML, HOT STAMP, PRESSURE SENSITIVE	OVERFLOW AFTER PRE & POST FLAME: HEAT TRANSFER LABEL, SILKSCREEN OVENS
MOLD NO. I-75803	DRAWING NO. C-11-950-53	REV B	

**950 CC
WIDE MOUTH ROUND**

PART LIB: CMS	DESIGNER & DATE: I TRENT 12-13-01
DESIGN AUTHORIZATION	P.D.E.: B MATTISON

TITAN PLASTICS